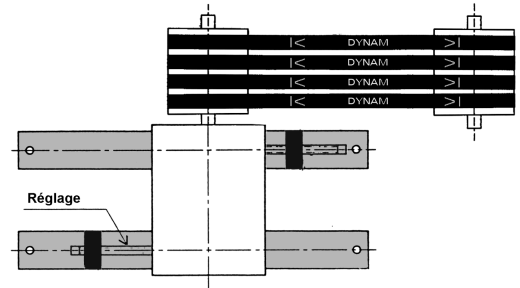




Function : to allow the motor to slide in order to tension the belts. Two slides are required.

General characteristics :

- The slides include two threaded adjusting parts which allow the motor to move. The slides enable the belts to be stretched to the correct tension.
- Moving adjusting part for the types Gcc 71 to Gcc 180.
Welded adjusting part for the types Gcc 225 to Gcc 355.
- All the parts are protected against corrosion. Rails are coated with a green paint and bolts are coated with zinc.
- Bolts are standard, they can be replaced easily.
- Easy installation of the motor.
- Made in steel, high resistance



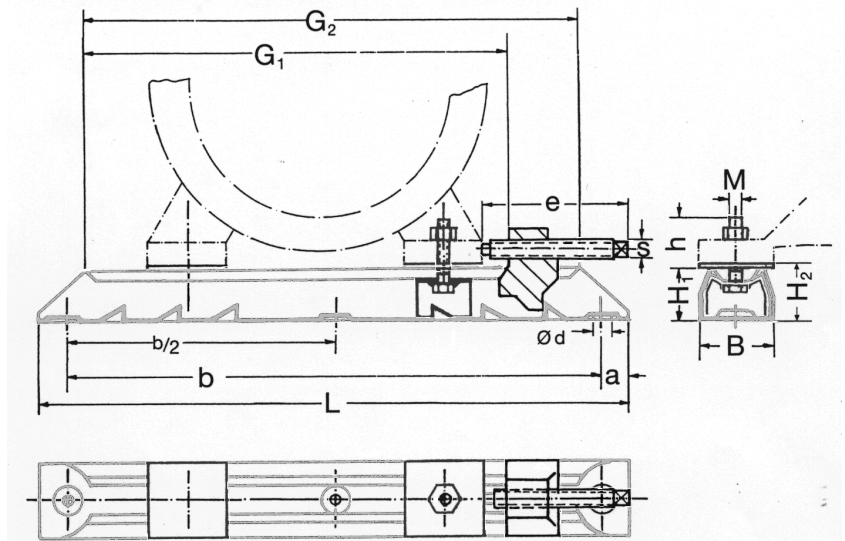
Technical characteristics :

FIXING GUIDE

The Dynam slides can be installed on any frame.

- On a wood frame, slides are supported by the bolts on each extremity.
- On a steel frame, slides can be welded on the frame.

The motor can be dismantled for maintenance.



type	Length L	Working length G1	Motor type	M x h	e x S	G2	a	b	b/2	d	B	H1	H2	Weight Kg
Gcc 71-6	312	240	63/71	M 6x19	75x6	262	16	280	-	12	40	28	30	1,4
Gcc 90-8	395	302	80/90	M 8x28	97x8	325	20	355	-	12	50	40	43	3,4
Gcc 132-10	530	413	100/112/132	M10x37	119x9	442	25	480	-	14	60	50	54	6,4
Gcc 180-12	686	538	160/180	M12x43	154x12	575	28	630	315	18	75	60	64	12,8
Gcc 225-16	864	700	200/225	M16x60	300x16	810	32	800	400	24	90	75	-	16,6
Gcc 280-20	1072	865	250/280	M20x77	360x19	995	36	1000	500	30	112	100	-	33,4
Gcc 355-24	1330	1065	315/355	M24x95	430x21	1215	40	1250	625	30	130	125	-	56,6

Example of designation : motor slides Gcc 132.10

132 : maximum height of the motor shaft
 10 . diameter of fixing bolts for the motor