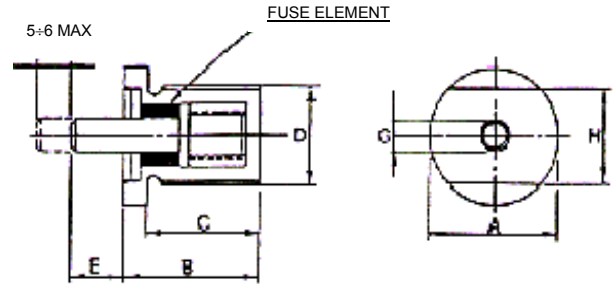
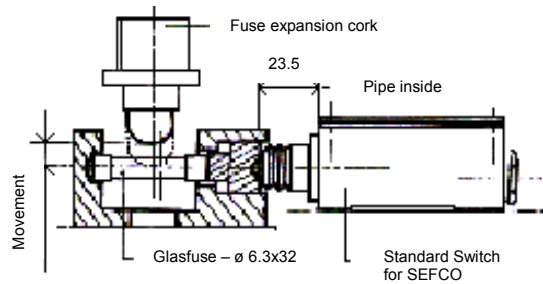


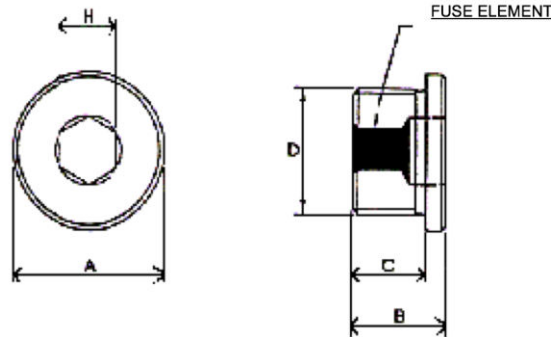


FUSE EXPANSION PLUG UND SWITCH FOR SEFCO



| Size COFLU ID | DIMENSIONS | | | | | | | | TEMPERATURE AND COLOUR | | | Mass (kg) |
|------------------|------------|----|----|-------|---|---|----|-------|------------------------|-------|-------|--------------|
| | A | B | C | D | E | G | H | white | red | green | | |
| 10 | 18 | 19 | 16 | ¼ GAS | 8 | 4 | 14 | 120°C | 145°C | 180°C | 0.016 | |
| 20 | 18 | 19 | 16 | ¼ GAS | 8 | 4 | 14 | 120°C | 145°C | 180°C | 0.016 | |
| 25 | 18 | 19 | 16 | ¼ GAS | 8 | 4 | 14 | 120°C | 145°C | 180°C | 0.016 | |
| 30 | 18 | 19 | 16 | ¼ GAS | 8 | 4 | 14 | 120°C | 145°C | 180°C | 0.016 | |
| 40 | 18 | 19 | 16 | ¼ GAS | 8 | 4 | 14 | 120°C | 145°C | 180°C | 0.016 | |
| 50 | 26 | 19 | 15 | ½ GAS | 8 | 4 | 19 | 120°C | 145°C | 180°C | 0.048 | |
| 55 | 26 | 19 | 15 | ½ GAS | 8 | 4 | 19 | 120°C | 145°C | 180°C | 0.048 | |
| 60 | 26 | 19 | 15 | ½ GAS | 8 | 4 | 19 | 120°C | 145°C | 180°C | 0.048 | |
| 65 | 26 | 19 | 15 | ½ GAS | 8 | 4 | 19 | 120°C | 145°C | 180°C | 0.048 | |
| 70 | 26 | 19 | 15 | ½ GAS | 8 | 4 | 19 | 120°C | 145°C | 180°C | 0.048 | |
| 75 | 26 | 19 | 15 | ½ GAS | 8 | 4 | 19 | 120°C | 145°C | 180°C | 0.048 | |
| 80 | 26 | 19 | 15 | ½ GAS | 8 | 4 | 19 | 120°C | 145°C | 180°C | 0.048 | |
| 85 | 26 | 19 | 15 | ½ GAS | 8 | 4 | 19 | 120°C | 145°C | 180°C | 0.048 | |
| 90 | 32 | 20 | 16 | ¾ GAS | 8 | 4 | 22 | 120°C | 145°C | 180°C | 0.075 | |
| 95 | 32 | 20 | 16 | ¾ GAS | 8 | 4 | 22 | 120°C | 145°C | 180°C | 0.075 | |

STANDARD FUSE PLUG



| Size COFLUID | DIMENSIONS | | | | | TEMPERATURE AND COLOUR | | | Mass (kg) |
|-----------------|------------|----|----|-------|----|------------------------|-------|-------|--------------|
| | A | B | C | D | H | white | red | green | |
| 10 | 18 | 15 | 11 | ¼ GAS | 6 | 120°C | 145°C | 180°C | 0.016 |
| 20 | 18 | 15 | 11 | ¼ GAS | 6 | 120°C | 145°C | 180°C | 0.016 |
| 25 | 18 | 15 | 11 | ¼ GAS | 6 | 120°C | 145°C | 180°C | 0.016 |
| 30 | 18 | 15 | 11 | ¼ GAS | 6 | 120°C | 145°C | 180°C | 0.016 |
| 40 | 18 | 15 | 11 | ¼ GAS | 6 | 120°C | 145°C | 180°C | 0.016 |
| 50 | 26 | 19 | 15 | ½ GAS | 10 | 120°C | 145°C | 180°C | 0.048 |
| 55 | 26 | 19 | 15 | ½ GAS | 10 | 120°C | 145°C | 180°C | 0.048 |
| 60 | 26 | 19 | 15 | ½ GAS | 10 | 120°C | 145°C | 180°C | 0.048 |
| 65 | 26 | 19 | 15 | ½ GAS | 10 | 120°C | 145°C | 180°C | 0.048 |
| 70 | 26 | 19 | 15 | ½ GAS | 10 | 120°C | 145°C | 180°C | 0.048 |
| 75 | 26 | 19 | 15 | ½ GAS | 10 | 120°C | 145°C | 180°C | 0.048 |
| 80 | 26 | 19 | 15 | ½ GAS | 10 | 120°C | 145°C | 180°C | 0.048 |
| 85 | 26 | 19 | 15 | ½ GAS | 10 | 120°C | 145°C | 180°C | 0.048 |
| 90 | 32 | 20 | 16 | ¾ GAS | 12 | 120°C | 145°C | 180°C | 0.075 |
| 95 | 32 | 20 | 16 | ¾ GAS | 12 | 120°C | 145°C | 180°C | 0.075 |

