

- 1 : Bush
- 2 : Box
- 3 : Mobile holder
- 4 : Bearings (type G) or rollers (type F et S)
- 5 : Bronze rings + reedle thrust
- 6 : Flexible parts
- 7 : Adjustment nut
- 8 : Stop screw
- 9 : Switch

General specifications

- 3 different types : G,F and S
 - G « with slip » : unclutching between 1 and 3
 - F « with no slip » : no unclutching between 1 and 3 (lifting apparatus)
 - S « synchrone » : restand after a rotation of 360° (Keep the indexing).
- Protection from oxydation by phosphatation
- Closed apparatus, greased (no maintenance)

Apparatus selection

- Set the clutch in the kinematic chain just next to the mechanism to be protected
- setting off torque established from the nominal torque C (Nm):

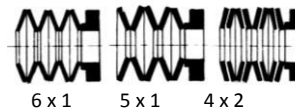
$$C = 9550 \times \frac{P}{N}$$
 P : engine power (kW)
 N : clutch rotation speed (tr/mn)
- this value must be put up by 50% to 100% to take the starting overtorque due to the inertia of the dragged mechanism into account

Type	Thickness	Size 0	Size 1 to 4
1		6 x 1	6 x 1
2	medium	5 x 1	5 x 1
3	medium thick	4 x 2 -	- 5 x 1

Torque adjustment

- Torque range according to different assemblies of flexible parts
 The thickness and the disposition of the washers depend on the assembly type

The disposition of the washers



Assembly adaptation

- Prebored or bored with a standard keyway
- For mobiles with important loads, maintain the mobile with sleeves or bearings
- The groove allows to set a security radial key between the mobile and the mobileholder (3)

- Adjustment of the torque according to the high tithtening of the nut. (7)
- For a precised ajustement, install the limiter on a fixed shaft, install a lever arm on the mobile holder. Install loads on the horizontal shaft, untighten the nut until the starting a small impulsion with the finger, block the nut.

Options

- Apparatus with a bearing holder or a long bush (see recto)
- The switch can be supplied on request (see technical data sheet 78003)
- Torque limiter with an elastic coupling (see technical data sheet 77005)

SEFCO® R2 Technical characteristics

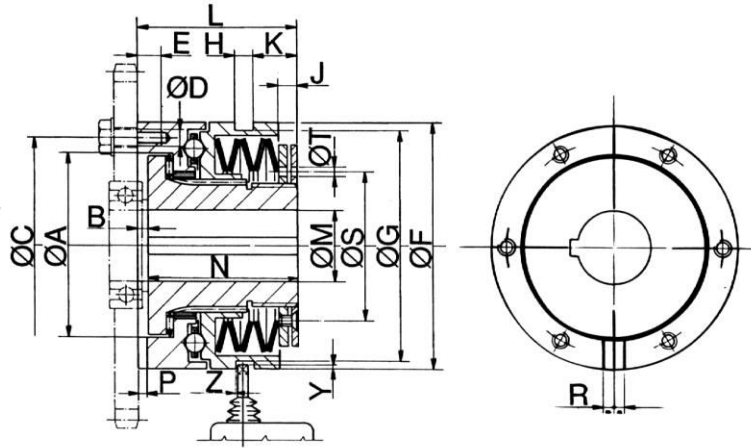
Limiter type	Setting off limited torque in Nm						Box movement in mm (H)		
	G	G	G	F / S	F / S	F / S	G	F	S
Pilling type	1	2	3	1	2	3			
Size 0	2,5-5	5-10	10-20	5-10	10-20	20-40	1,4	1,2	0,6
Size 1	6-12	12-25	25-60	12-25	25-50	50-100	2,3	1,8	1
Size 2	12-25	25-50	50-120	25-50	50-100	100-200	2,4	2	1,2
Size 3	25-50	50-100	100-250	50-100	100-200	200-400	2,7	2,2	1,2
Size 4	50-100	100-200	200-500	100-200	200-400	400-800	3,7	2,5	1,4

Limiter type	Speed in RPM								
	G	G	G	F	F	F	S	S	S
Pilling type	1	2	3	1	2	3	1	2	3
Size 0	3300	3300	1800	1000	550	270	4400	4400	3000
Size 1	2890	2890	1450	950	480	240	4300	4300	2900
Size 2	2350	2350	1200	800	400	200	3600	3600	2400
Size 3	2000	2000	1000	650	330	150	3000	3000	1600
Size 4	1650	1650	850	550	270	130	2500	2500	1600

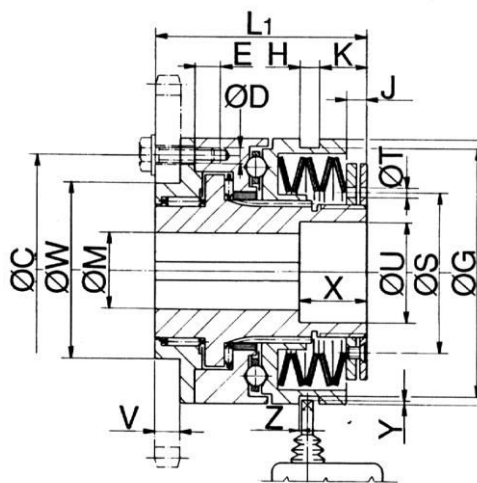
Bare apparatus (G0, F0, S0)

Designation : SEFCO R2 F72 Size 1 (Type : F - 7 : option with bearing holder - 2 : washer assembly)

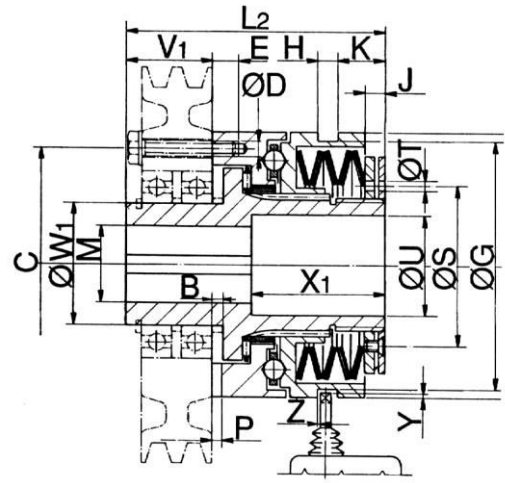




Bearings Apparatus (G7, F7, S7)



Apparatus with long bush (G8, F8, S8)





Dimensional Features

Size	A	B	C	D	E	F	G	H	J	K	L	L1	L2	M	
														min.	max.
0	41	4	48	6xM5	6,5	55	50	9	3	7,5	38,5	51,5	66	7	20
1	60	4	70	6xM5	8	82	72	9	6	11,5	52	70	83	10	25
2	78	5	89	6xM6	10	100	91	9	6	12	61	78	100	14	35
3	90,5	5	105	6xM8	12	120	112	9	8,5	22	78	96	125	18	45
4	105	6,5	125	6xM10	15	146	140	9	11	27	100	124,5	152,5	24	55

Size	N	P	R	S	T	T1	T2	U	V	V1	W	W1	X	X1	Y	Z
0	35	3,1	6	36	4	4	3	21	8	27,5	38	28	15,5	25,5	2	0,3
1	48	3,1	6	48	5	4	8	26	10	33	50	38	20	35	2	0,3
2	56	3,6	8	70	5	5	10	36	12	39	60	52	25	45	2	0,5
3	72	4,1	10	82	5	4	10	46	12	47	80	65	29	59	2	0,5
4	93,5	4,1	12	104	7	5,5	13	56	16	52,5	100	78	30	60	2	0,8

Dimensional features for apparatus with bearing holder and long bush are the same as standard apparatus.